

GEORGIA



TRIP

TOWING & RECOVERY INCENTIVE PROGRAM



TOWING & RECOVERY INCENTIVE PROGRAM OF GEORGIA

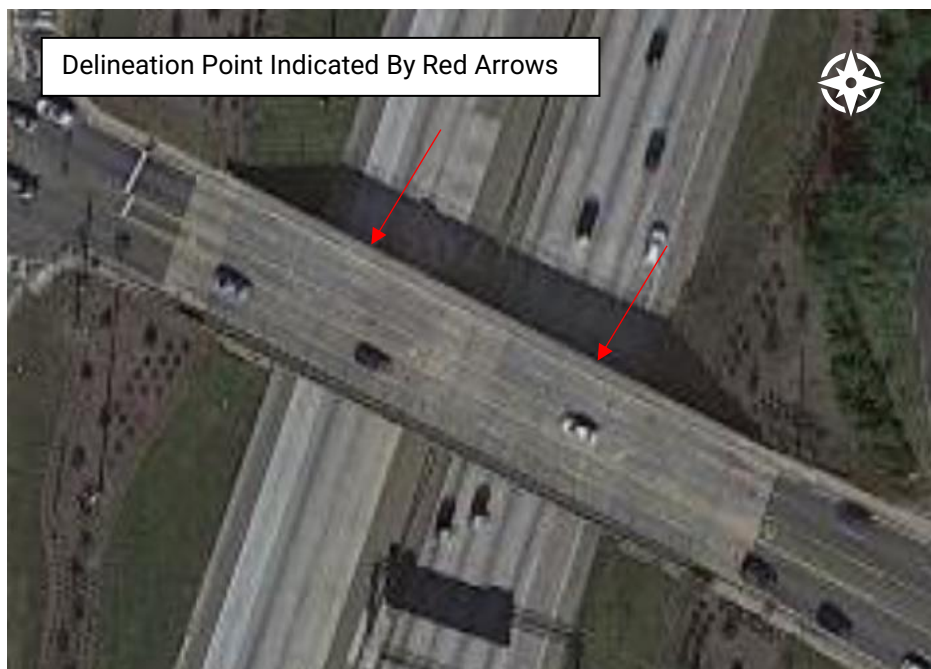
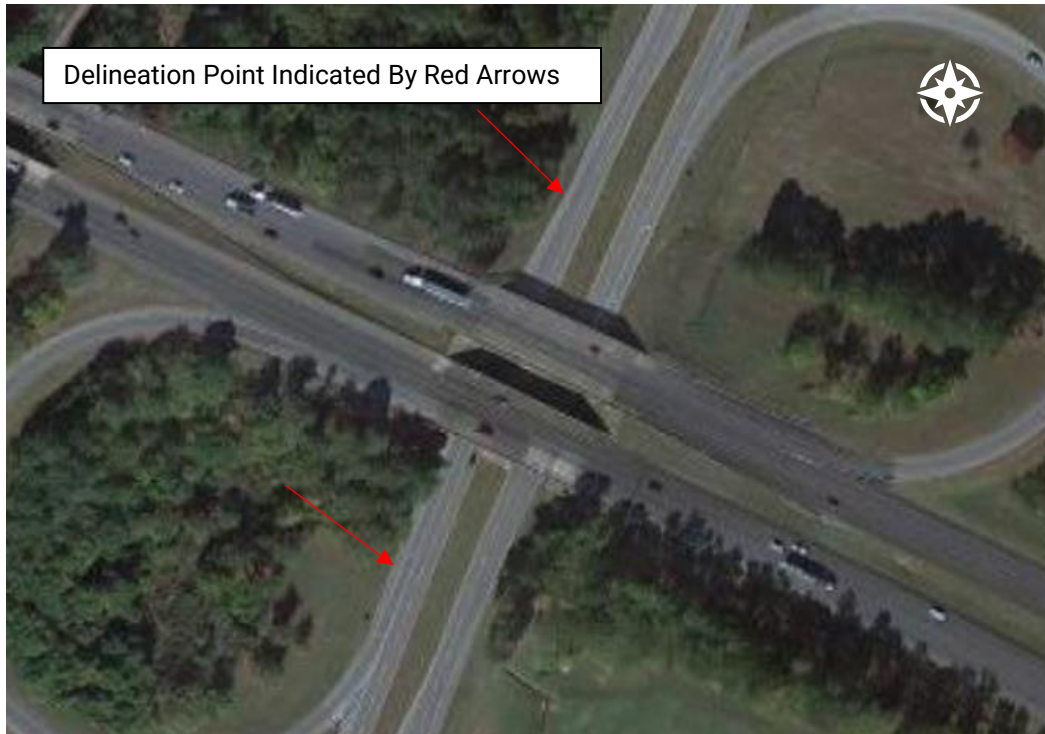
TRIP Recovery Zones

Updated: June 1, 2026



Delineation Points

The satellite imagery on these pages illustrates examples of delineation points at interstate overpasses and underpasses. In the interest of consistency, these transition points will always be on the northern or western edge of the over/underpass unless specifically noted in the zone boundary description.



Recovery Zone 1 (I-75 North Side):

Beginning at the intersection of I-75 and Fairmount Highway (Exit 312), along the northern edge of the Fairmount Highway overpass bridge, including all ramps on the southern side of that point and the Fairmount Highway overpass bridge and continuing south to the intersection of I-75 and U.S. Highway 411 (Exit 293) along the northern edge of the pavement of U.S. Highway 411 and including all ramps on the northern side of that point.

Recovery Zone 2 (I-75 North Side):

Beginning at the intersection of I-75 and U.S. Highway 411 (Exit 293) along the northern edge of the pavement of U.S. Highway 411, including all ramps and the roadway on the southern side of that point and continuing south to the Cherokee/Cobb County line as indicated by roadway signage on both the south and north bound sides of the highway.

Recovery Zone 3 (I-75 and I-575):

Beginning on I-75 at the Cherokee/Cobb County line as indicated by roadway signage on both the south and north bound sides of the highway and continuing south along I-75 to the intersection of Windy Hill Road (Exit 260) along the northern edge of the Windy Hill Road overpass bridge and including all ramps north of that point.

AND beginning on I-575 at the Cherokee/Cobb County line as indicated by roadway signage on both the south and north bound sides of the highway and continuing south along I-575 to and including the interchange of I-75/I-575.

AND including the Northwest Corridor (NWC) Reversible Express Lanes system from the northernmost terminus at Access Point 5 (I-75) south along the system to the southernmost terminus at I-285 and from Access Point 6 (I-575/Shallowford Road) south along the system to the junction with the I-75 NWC express lanes when the system is flowing in a SOUTHBOUND configuration and from Access Point 2 (Terrell Mill Road) north along the system to the northernmost terminus points on both I-75 and I-575 when the system is in a NORTHBOUND configuration. (*)

Recovery Zone 4 (I-575):

Beginning at the intersection of I-575 and SR 372, along the northern pavement edge of the south bound lanes of SR 372 and continuing south to the Cherokee/Cobb County line as indicated by roadway signage on both the south and north bound sides of the highway.

AND including the Northwest Corridor Reversible Express Lanes system from the northernmost terminus at Access Point 8 (I-575) south along the system to Access Point 6 (I-575/Shallowford Road) when the system is flowing in a SOUTHBOUND configuration. (*)

Recovery Zone 5 (I-285 NW):

Beginning at the intersection of I-75 and Windy Hill Road (Exit 260) along the northern edge of the Windy Hill Road overpass bridge and including all ramps and the overpass bridge south of that point and continuing south to the intersection of I-75 and 10th Street (Exit 250) along the northern edge of the 10th Street overpass bridge.

AND including the Northwest Corridor Reversible Express Lanes from the southernmost terminus at Access Point 1 (I-285) north to Access Point 2 (Terrell Mill Road) when the system is flowing in a NORTHBOUND configuration. (*)

AND beginning on I-285 at the intersection of Martin Luther King, Jr. Drive (Exit 9) along the northern edge of the Martin Luther King, Jr. Drive overpass bridge and including all ramps north of that point and continuing north/east to the intersection of I-285 and U.S. 23/Buford Highway (Exit 32) along the northern edge of the pavement of Buford Highway and including all ramps north/west of that point.

AND beginning at the intersection of I-20 and SR 5/Bill Arp Road (Exit 34) along the western edge of the SR 5 overpass bridge, including all ramps east of that point and the overpass bridge and continuing east on I-20 to the intersection of I-20 and Joseph E. Lowery Boulevard (Exit 55A) along the western edge of the pavement of Joseph E. Lowery Boulevard including all ramps west of that point.

AND beginning at the intersection of SR 400/US 19 and Abernathy Road (Exit 5A) along the northern edge of the pavement of Abernathy Road including all ramps south of that point and the Abernathy Road underpass and continuing south on SR 400/US 19 to, and including, the entirety of the interchange of SR 400 and I-85.

AND beginning on I-85 at the DeKalb/Fulton County line as indicated by roadway signage on both the south and north bound sides of the highway south along I-85 to, and including, the entirety of the I-85/I-75 (Exit 84) interchange.

Recovery Zone 6 (GA 400):

Southbound:

Beginning at the intersection of SR 400/US 19 and Buford Road/SR 20 (Exit 14) and including all ramps and bridges at that interchange and continuing south to the northern edge of the Shilo Rd overpass.

Picks back up at mile Marker 8.8 and continuing south to the intersection of SR 400/US 19 and Abernathy Road (Exit 5A) along the northern edge of the Abernathy Road overpass bridge and including all ramps north of that point

Northbound:

Beginning at the northern edge of the Shilo Rd overpass bridge and continuing north to the intersection of SR 400/ US 19 and Buford Road/SR 20 (Exit 14) and including all ramps and bridges at that interchange.

Recovery Zone 7 (I-85 North Side):

Beginning on I-85 at the Barrow/Gwinnett County line as indicated by roadway signage on both the south and north bound sides of the highway and continuing south to the DeKalb/Fulton County line as indicated by roadway signage on both the south and north bound sides of the highway.

AND beginning on I-985 at the Hall/Gwinnett County line as indicated by roadway signage on both the south and north bound sides of the highway and continuing south to the junction of I-985 and I-85 including the entire interchange.

AND beginning on SR 316 at the intersection of SR 316 and SR 20 and continuing west to the junction of SR 316 and I-85, including the entire interchange.

AND beginning on I-285 at its intersection with U.S. 23/Buford Highway (Exit 32) along the northern/western edge of the pavement of Buford Highway and including all ramps and the underpass roadway south/east of that point and continuing south/east along I-285 to the intersection of Northlake Parkway (Exit 36) along the southern edge of the overpass bridge and including the entire interchange.

Recovery Zone 8 (I-985):

Beginning on I-985 at the intersection of YMCA Drive/Lanier Tech Drive and continuing south to the Hall/Gwinnett County line as indicated by roadway signage on both the south and north bound sides of the highway.

Recovery Zone 9 (US 78):

Beginning on US 78 (Stone Mountain Freeway) at the intersection of E. Park Place Boulevard and continuing west to the intersection of Valley Brook Road including the entire interchange.

AND beginning on I-285 at the intersection of Northlake Parkway (Exit 36) along the southern edge of the overpass bridge and continuing south on I-285 to the intersection of E. Ponce de Leon Avenue (Exit 40) along the southern edge of the overpass bridge including all ramps and the E. Ponce de Leon Avenue overpass bridge.

Recovery Zone 10 (I-20 East Side):

Beginning on I-20 at the intersection of Columbia Drive (Exit 66) along the eastern edge of the overpass bridge and continuing east to the intersection of Alcovy Road (Exit 92) including the entire interchange.

AND beginning on I-285 at the intersection of E. Ponce de Leon Avenue (Exit 40) along the southern edge of the overpass bridge and continuing south/west along I-285 to the intersection of Bouldercrest Road (Exit 51) along the western/southern edge of the overpass bridge including all ramps east/north of that point and the Bouldercrest Road overpass bridge.

Recovery Zone 11 (I-20 West Side):

Beginning at the intersection of I-20 and SR 61(Exit 24) along the western edge of the SR 61 overpass bridge and including all ramps east of that point and continuing east on I-20 to the intersection of I-20 and SR 5/Bill Arp Road (Exit 34) along the western edge of the SR 5 overpass bridge including all ramps west of that point.

Recovery Zone 12 (I-75/I-285 South/West Side):

Beginning at the intersection of I-75/85 and 10th Street (Exit 250) along the northern edge of the 10th Street overpass bridge including all ramps south of that point and the 10th Street overpass bridge and continuing south along I-75/85 to the junction of I-75 & I-85 including the entire interchange and continuing south on I-85 to the intersection of Cleveland Avenue (Exit 76) along the northern edge of the pavement on Cleveland Avenue including all ramps north of that point.

AND continuing south on I-75 from the southern junction of I-75/I-85 to the Clayton/Henry County line as indicated by roadway signage on both the south and north bound sides of the highway.

AND beginning at the intersection of I-675 and I-285 including the entire junction and continuing south on I-675 to the Clayton/Henry County line as indicated by roadway signage on both the south and north bound sides of the highway.

AND beginning at the intersection of I-285 and Riverdale Road (Exit 60) along the western edge of the Riverdale Road overpass bridge including all ramps east of that point and the Riverdale Road overpass bridge and continuing east/north along I-285 to the intersection of Bouldercrest Road (Exit 51) along the western/southern edge of the overpass bridge including all ramps west/south of that point.

AND beginning at the intersection of I-20 and Joseph E. Lowery Boulevard (Exit 55A) along the western edge of the pavement of Joseph E. Lowery Boulevard including all ramps east of that point and the Joseph E. Lowery Boulevard underpass roadway and continuing east on I-20 to the intersection of Columbia Drive (Exit 66) along the eastern edge of the Columbia Drive overpass bridge including all ramps and the Columbia Drive overpass bridge.

AND beginning at the intersection of SR 166 and Metropolitan Parkway along the western edge of the pavement on Metropolitan Parkway including all ramps and the Metropolitan Parkway underpass roadway and continuing to and including the junction of SR 166 and I-75/85.

Recovery Zone 13 (I-85/I-285 West/South Side):

Beginning on I-285 at the intersection of Martin Luther King, Jr. Drive (Exit 9) along the northern edge of the Martin Luther King, Jr. Drive overpass bridge and including all ramps south of that point and the Martin Luther King, Jr. Drive overpass bridge and continuing south/east on I-285 to the intersection of Riverdale Road (Exit 60) along the western edge of the Riverdale Road overpass bridge including all ramps west of that point.

AND beginning on GA Spur 14 at the intersection of Buffington Road including the entire interchange and continuing east on GA Spur 14 to the intersection of I-285 and including the entire interchange.

AND beginning at the intersection of I-85 and Cleveland Avenue (Exit 76) along the northern edge of the pavement on Cleveland Avenue including all ramps south of that point and the Cleveland Avenue underpass roadway and continuing south on I-85 to the intersection of SR 74/Senoia Road (Exit 61) along the northern edge of the SR 74 overpass bridge including all ramps north of that point.

AND beginning at the intersection of I-285 and SR 166 including the entire interchange and continuing east on SR 166 to its intersection with Metropolitan Parkway along the western edge of the pavement on Metropolitan Parkway.

Recovery Zone 14 (I-85 South Side):

Beginning on I-85 at the intersection of SR 74/Senoia Road (Exit 61) along the northern edge of the SR 154 overpass bridge including all ramps south of that point and the SR 154 overpass bridge and continuing south on I-85 to the intersection of I-85 and SR 54 (Exit 28) along the

northern edge of the SR 54 overpass bridge, including all ramps on the northern side of that point.

Recovery Zone 15 (I-75 South Side):

Beginning on I-75 at the Clayton/Henry County line as indicated by roadway signage on both the south and north bound sides of the highway and continuing south on I-75 to Mile Post 216 as indicated by signage on both the south and north bound sides of the highway.

AND beginning on I-675 at the Clayton/Henry County line as indicated by roadway signage on both the south and north bound sides of the highway and continuing south on I-675 to the intersection of I-675 & I-75 including the entire interchange.

AND including the entirety of the South Metro Reversible Express Lanes system (*).

Recovery Zone 16 (I-75 South Side):

Beginning on I-75 at Mile Post 216 as indicated by signage on both the south and north bound sides of the highway and continuing south on I-75 to the Butts/Lamar County Line as indicated by signage on both the south and north bound sides of the highway.

Recovery Zone 17 (I-20 West Side – Carroll/Haralson County):

Beginning at the intersection of I-20 and SR 61 (Exit 24) along the western edge of the SR 61 overpass bridge and including all ramps west of that point and continuing west on I-20 to the Georgia/Alabama state line as indicated by roadway signage on both the west and eastbound sides of the highway.

Recovery Zone 18 (I-75 North – Gordon County):

Beginning on I-75 at SR 3/US 41/US 76 (Exit 336) along the northern edge of the SR 3/US 41/US 76 overpass bridge, including all ramps on the southern side of that point and the SR 3/US 41/US 76 overpass bridge and continuing south on I-75 to the intersection of I-75 and Fairmount Highway (Exit 312) along the northern edge of the Fairmount Highway overpass bridge and including all ramps on the northern side of that point.

Recovery Zone 19 (I-85 North Side – Barrow/Jackson County):

Beginning on I-85 at the Gwinnett/Barrow County line as indicated by roadway signage on both the south and north bound sides of the highway and continuing north on I-85 to the bridge over Holder's Creek as delineated by the northern endpoint of the concrete barrier walls on both the south and north bound sides of the bridge.

Recovery Zone 20 (I-85 North Side – Jackson County):

Beginning on I-85 at the northern end of the bridge over Holder's Creek as delineated by the northern endpoint of the concrete barrier walls on both the south and north bound sides of the bridge and continuing north on I-85 to SR 63/Martin Bridge Rd (Exit 154) along the northern

edge of the SR 63/Martin Bridge overpass bridge, including all ramps on the southern side of that point and the SR 63 overpass bridge.

Recovery Zone 21 (I-75/I-16):

Beginning on I-75 at the Monroe/Bibb County line and continuing South, covering the entire I-75/I-16 interchange, to the intersection of Forsyth St (Exit 164) along the northern edge of the Forsyth St overpass bridge and including all ramps north of that point.

AND, starting at the beginning of I-16 and continuing east to the Bibb/Twiggs County line on I-16.

Recovery Zone 22 (I-475):

Beginning on I-475 at the Monroe/Bibb County line and continuing south to Mile Marker 1 on I-475.

Recovery Zone 23 (I-75/I-475):

Beginning at the intersection of I-75 and Forsyth St along the northern edge of the Forsyth St overpass bridge and continuing south to the intersection of I-75 and SR 96 (Exit 142) along the northern edge of SR 96 overpass bridge and including all ramps on the northern side of that point.

AND, beginning at Mile Marker 1 on I-475 and continuing south to the I-75 interchange, covering the entire interchange.

Recovery Zone 24 (I-75 North – Georgia/Tennessee):

Beginning on I-75 at the Georgia/Tennessee State line as indicated by roadway signage on both the north and southbound sides of the highway and continuing south on I-75 to the intersection of I-75 and SR 3/US 41/US 76 (Exit 336) along the northern edge of the SR 3/US 41/US 76 overpass bridge, including all ramps on the northern side of that point.

Recovery Zone 25 (I-85 North – Georgia/South Carolina):

Beginning on I-85 at the Georgia/South Carolina state line as indicated by roadway signage on both the north and southbound sides of the highway and continuing south on I-85 to I-85 at SR 63/Martin Bridge Rd (Exit 154) along the northern edge of the SR 63/Martin Bridge Rd overpass bridge including all ramps on the northern side of that point.

Recovery Zone 26 (I-85 South – Alabama/Georgia):

Beginning on I-85 at the intersection of SR 54 (Exit 28) along the northern edge of the SR 54 overpass bridge including all ramps on the southern side of that point and the SR 54 overpass bridge and continuing south on I-85 to the Alabama/Georgia state line as indicated by roadway signage on both the north and southbound sides of the highway.

(*) In the event of a Towing and Recovery Incentive Program (TRIP) incident inside of either reversible express lane (REL) systems (NWC or South Metro), the on-duty transportation management center (TMC) supervisor and/or on-scene Highway Emergency Response Operator (HERO) supervisor shall reserve the right to alter the TRIP COMPANY response in the event the incident will be accessed via an emergency access gate if doing so will allow a more timely response to the scene. This MUST be coordinated between the TMC and HERO as early in the incident as feasible, and ideally prior to TRIP COMPANY notification. TRIP Managers will review all incidents within the REL systems and consider response times accordingly.